



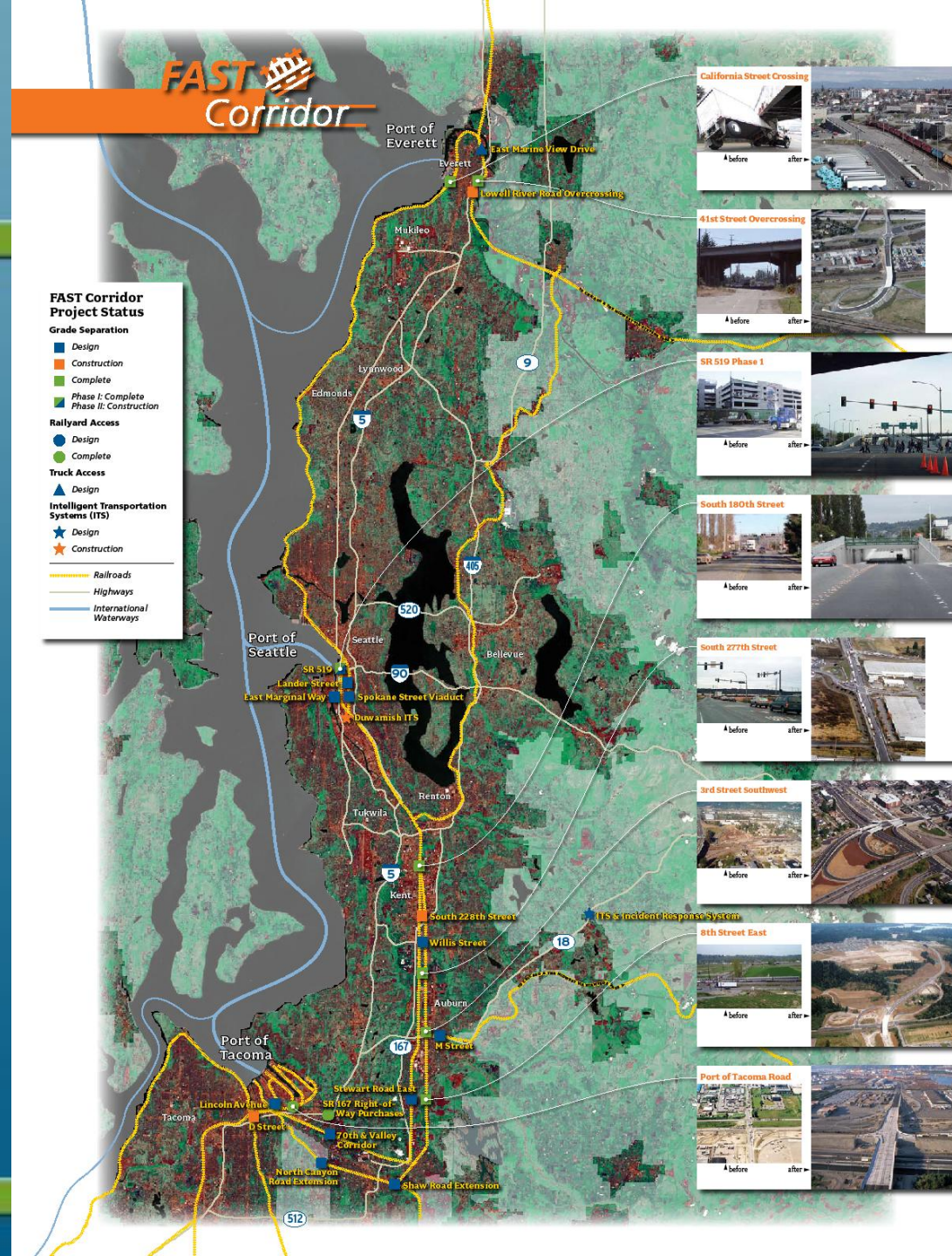
# Port of Seattle

**Potential Port contribution to  
Duwamish ITS Phase 3, and  
Kent South 228<sup>th</sup> Street**

# Working with partners

## Port contribution to FAST Phase 2 projects:

- Continues Port commitment to FAST Corridor Partners
- Fills final funding gaps



# Memoranda of Agreement

---

- Port contribution for construction and deployment
- Tied to:
  - Benefit to the Port
  - Design principles and concepts contained in MOA
- Port collaboration on design changes

# Funding Request

Seattle Duwamish ITS Phase 3	\$500,000
Kent S. 228 <sup>th</sup> Grade Separations	\$1,190,000
Port staff resources & expenses	\$20,000
<b>Total</b>	<b>\$1,710,000</b>